



Pelistry

Sage House, High Lanes,
St Mary's, TR21 0NW



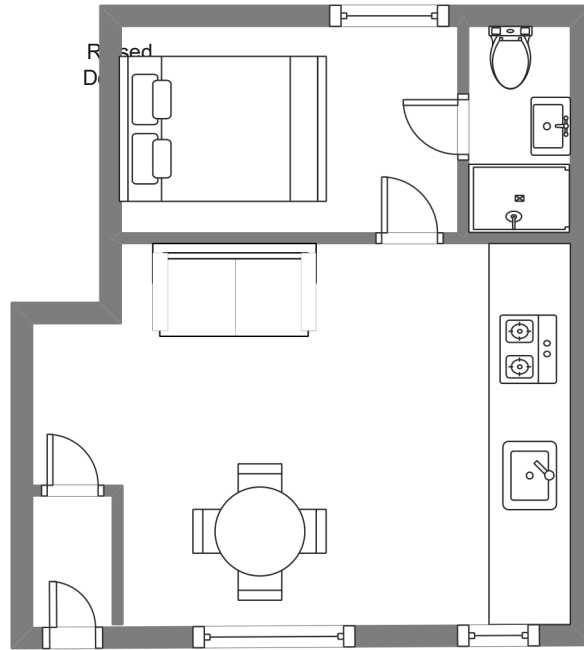
Sleeps 2 | Tuesday Change over

- Double arrangement
- Located in a quiet area of St Mary's
- Fully refurbished
- Outside seating area
- Internet access
- Children and pets welcome

This dog friendly high quality apartment is set in the beautiful St Mary's countryside. It sleeps two in a double bedroom with en suite shower room.

The apartment is well equipped with all mod cons and has a lovely sitting out area. The apartment joins Bar Point and Watermill so is perfect for a large group that still want their own space. Altogether Pelistry, Bar Point and Watermill will sleep 15 people.

Layout



Getting to the property

Map of St Marys



Directions from the Quay | Walking time: 30 minutes

Head towards the entrance to the quay Turn left at The Mermaid Inn on to Hugh Street Keep to the left side of the road Continue along Hugh Street past the park Continue past Holgates Green and out of town

Stay on the Telegraph Road for about a mile Follow it round to the left Turn right 5 minutes after Farmer Browns bulb shop The IOS Country House is on the next bend. The door to Pelistry is the one on the right.

What3words: [salon.airports.integrated](https://www.what3words.com/salon.airports.integrated)

Scilly Self Catering
Lower Strand
Isles of Scilly, TR21 0PS

Enquiries@scillyselfcatering.com
01720 422082
www.scillyselfcatering.com